

ARTWORK GUIDELINES

Option 1. Supplying us your logo



black



1 Pantone colour

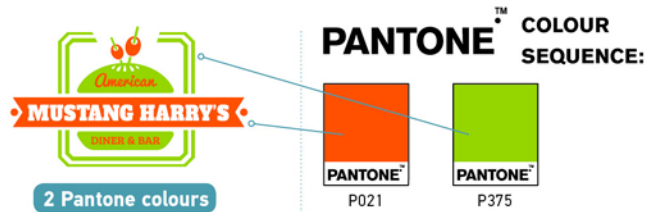


full colour

If you have chosen to have your artwork printed in black, 1 Pantone color or full color (CMYK), please supply us with a high-resolution file in any of the following formats.

.jpg .pdf .ai .eps .tif

IMPORTANT - 2 colour print



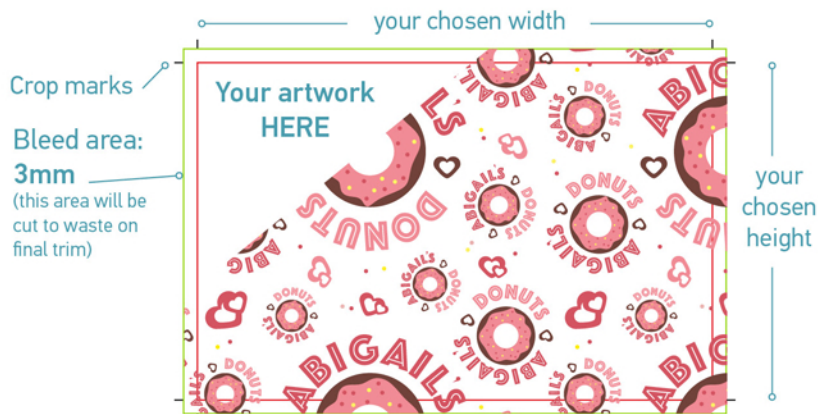
2 Pantone colours

If you have chosen to have your artwork printed in two colors, we only accept .ai files or a vector based .pdf - need advice, just give us a ring. x2 Pantone solid spot color references should be indicated within the file - all fonts must be outlined and images embedded at 300dpi.

.ai .pdf (vector based)

Option 2. Supplying us your final artwork

If you have your artwork already laid out and have chosen to print it black, 1 Pantone color, or full-color CMYK, please supply us with a high-resolution PDF. Please ensure all fonts get outlined and any images embedded in 300 dpi. PDF files should be set up at the required product size and include an additional bleed on each edge for trimming purposes.



If you are supplying us with final artwork and have chosen to have it printed in 2 Pantone colors, please supply as above a 'High resolution PDF' but we only accept .ai files or a vector based .pdf (a native Adobe Illustrator file) and x2 Pantone solid spot color references should be indicated within the file.

WHAT HAPPENS TO YOUR ARTWORK?

We will check over your supplied artwork.

2. We will email a pdf proof back to you for your final approval.
3. On your approval of the pdf proof, we will print your paper. Turn around time will usually be 10-14 working days.



www.gatorpaper.net

If you have any questions,

Call: (800) 957-4286

Email: sales@gatorpaper.com